

INDUSTRIAL

We recognise that not all of our seating will be used in traditional office environments so we have developed our Industrial seating range that has uncompromising strength and durability as the key drivers of its design. The range of options makes Industrial suitable for a wide range of environments.



STANDARD FEATURES

- (*Selected models only)
- Plastic base
- 50mm Hard wheel castors*
- Gas lift
- Polyurethane seat
- Polyurethane back*
- Standard Mechanism
- Draughtsman height gas lift, adjustable footring and glides

OPTIONAL FEATURES

- Castors for hard and soft floor coverings*

PERFORMANCE STANDARDS

This product has been designed to conform to the following standard and has been tested for type approval.

BS EN 16139:2013

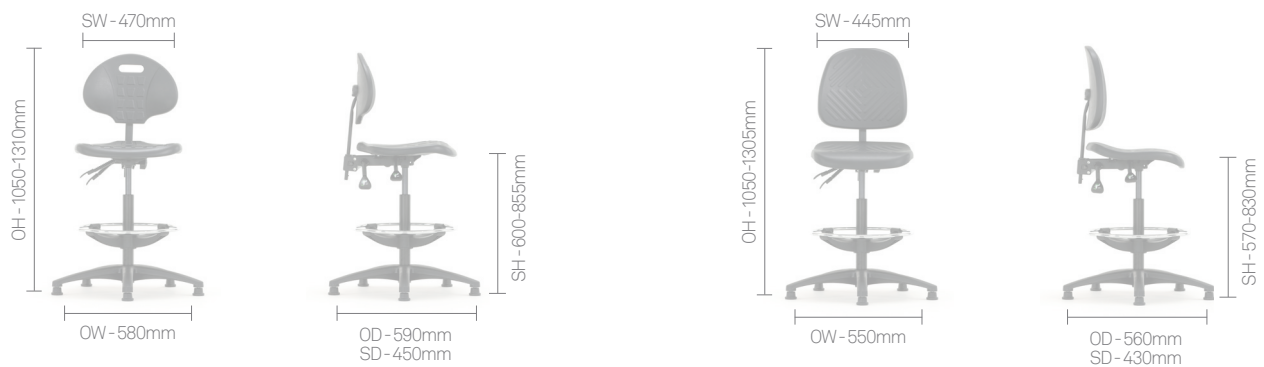
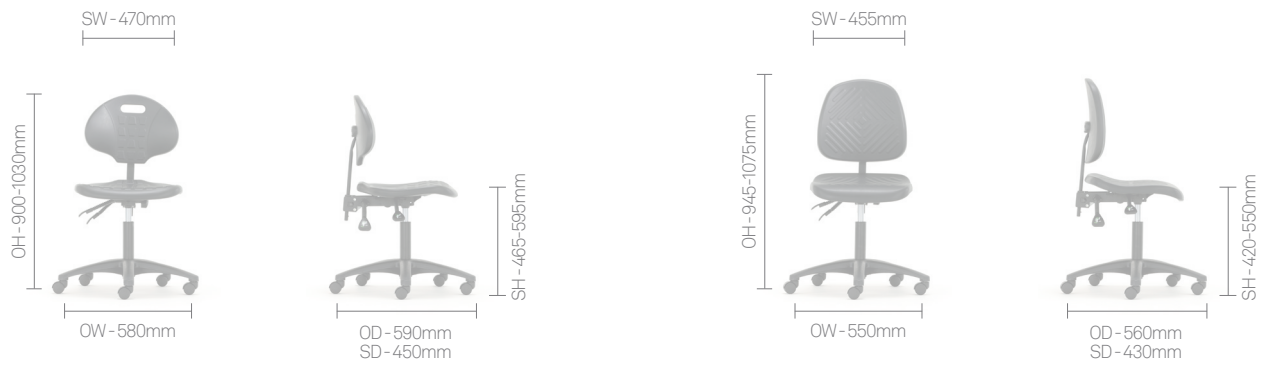
OPTIONS

Industrial is available in a range of stools, multi-purpose chairs and height adjustable draughtsman stools.



DIMENSIONS

OH-Overall Height OD-Overall Depth OW-Overall Width AH-Arm Height BH-Back Height SH-Seat Height SW-Seat Width SD-Seat Depth



FINISH OPTIONS

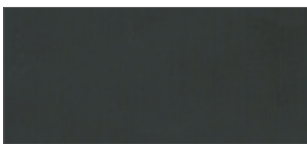
- Polyurethane seat and back available in Black
- 5 Star base available in Black Plastic

Seat & Back Finishes



Black (Polyurethane)

Base Finishes

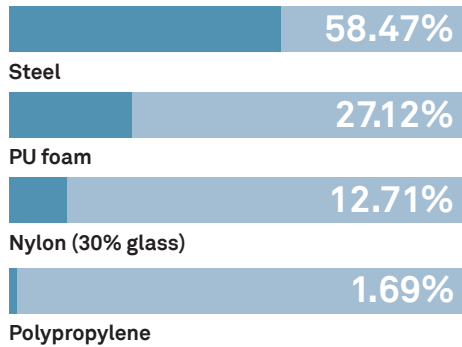


Black (Plastic)

ENVIRONMENTAL

Material Content

Components are constructed of the following



Recycled Content

Contains up to 29.00% of Recycled Material



Recyclability

The range is 99% recyclable

99%

Environmental information for this range has been based on T40IND.
For more detail please refer to individual EPA sheets.

THE SENATOR GROUP 3 R'S

The Senator Group is committed to continually improving the sustainability of all environmental aspects within our business.

To meet both international standards and our own environmental targets we apply the three R's principle

-Reduce, Reuse and Recycle.

Whilst recycling is the element which receives the most exposure it is actually the last option available and should never be the prime target in anyone's battle to reduce waste.

It is our duty as individuals and as a company to initially attempt to **Reduce** usage. Then we should look to **Reuse** wherever possible and finally, only after these two processes have been exhausted, should we consider **Recycling**.

-Reduce -Reuse -Recycle
