

PLUTO PLUS MESH

Pluto Plus Mesh delivers the same high performance as the Pluto Plus range. The addition of a breathable mesh back, available in a variety of colour choices, creates a modern feel and discourages fatigue. A fully synchronised mechanism allows the seat to be frequently and easily reconfigured without compromising comfort. Available with different arm options to meet your exact requirements.



STANDARD FEATURES

(*Selected models only)

- 5 Star base
- 60mm Hard wheel castors
- 3D Self-supporting mesh back
- Fully synchronised mechanism
- Fold down arms*
- Height adjustable arms*
- Adjustable lumbar support
- Headrest*

OPTIONAL FEATURES

- Multi-functional arm pad*
- 60mm seat depth adjustment
- Choice of finish options available – see finish page

PERFORMANCE STANDARDS

This product has been designed to conform to the following standards and has been tested for type approval.

- BS EN1335 –1:2000
- BS EN1335 – 2 /3 :2009
- BS5459 - 2:2000+A8:2008

DIMENSIONS

OH-Overall Height OD-Overall Depth OW-Overall Width AH-Arm Height BH-Back Height SH-Seat Height SW-Seat Width SD-Seat Depth



FINISH OPTIONS

- 5 Star base available in Black Plastic or Polished Aluminium
- Plastic components are available in Black
- Pluto Plus can be upholstered in a broad range of contract upholstery fabrics and vinyls from The Senator Group standard upholstery collection

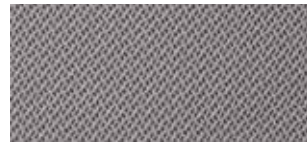
Mesh Colours



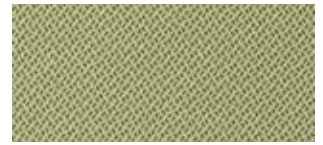
Black



Charcoal



Steel



Pistachio



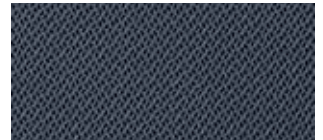
Surf



Ocean

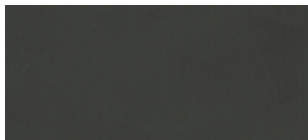


Morocco



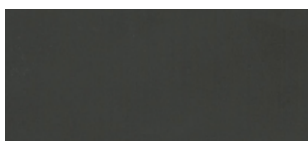
Aqua

Component Finishes



Black (Plastic)

Base Finishes



Black (Plastic)

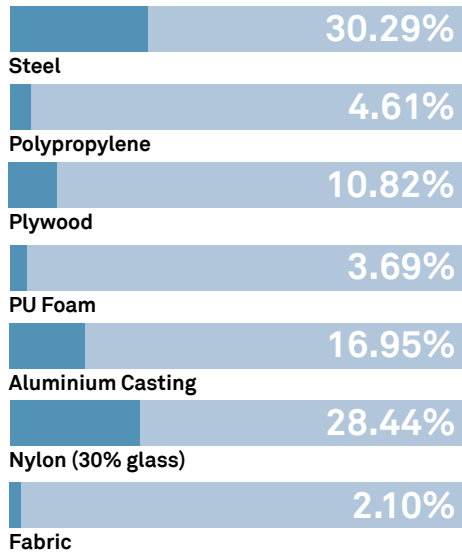


Polished Aluminium

ENVIRONMENTAL

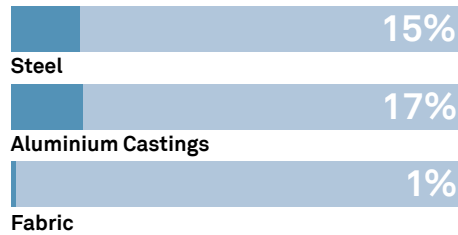
MATERIAL CONTENT

Components are constructed of the following



RECYCLED CONTENT

Contains up to 33% of Recycled Material



RECYCLABILITY

The range is 99% recyclable

99%

Environmental information for this range has been based on PPM90.
For more detail please refer to individual EPA sheets.

THE SENATOR GROUP 3 R'S

The Senator Group is committed to continually improving the sustainability of all environmental aspects within our business.

To meet both international standards and our own environmental targets we apply the three R's principle

-Reduce, Reuse and Recycle.

Whilst recycling is the element which receives the most exposure it is actually the last option available and should never be the prime target in anyone's battle to reduce waste.

It is our duty as individuals and as a company to initially attempt to **Reduce** usage. Then we should look to **Reuse** wherever possible and finally, only after these two processes have been exhausted, should we consider **Recycling**.

-Reduce
-Reuse
-Recycle